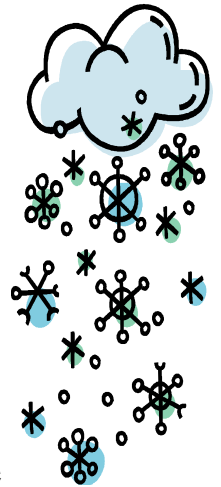


# *St. Luke School*

## *Inclement Weather Procedures*

With the cooler weather making its presence felt, we'd like to review our snow procedures.



### *School Closure:*

Normally, the decision to close school will be made in the early morning. Your best source for information is the St. Luke School website at [www.stlukeshoreline.org](http://www.stlukeshoreline.org). Every effort will be made to see that the local media has the information for their 6:00 AM announcements. St. Luke School uses KING, KOMO, and KIRO television and KOMO and KIRO radio stations to notify parents of our school closure plans. You may also find the information on the following websites: KING, KOMO, and KIRO.

We know that most of our students come to school in carpools. In many cases our personal cars are not as well equipped for travel in snow and ice as the buses used by public school children. Recognizing this, we encourage parents to keep children home when they judge travel from home to school would be hazardous. Even if school is open, *you* can best determine if the drive to school is worth the risk. In no case would students be negatively affected academically if you opt to keep them home because of unsafe traveling conditions.

### *Late Start:*

In some cases we will have a late start which means school will start at **10:30am**. Again, your best source for information is the school's website at [www.stlukeshoreline.org](http://www.stlukeshoreline.org). Notice of a late start will also be broadcast on the 6:00 AM announcements of the above noted radio and television stations. ***If there is a late start***, both morning and afternoon Kindergarten Prep will be cancelled.

### *Extension:*

For snow days, extension follows the same procedures as that of the school. If there is no school, there is no extension. In the case of a late start, there ***will be*** extension and it will open at **7am**.

